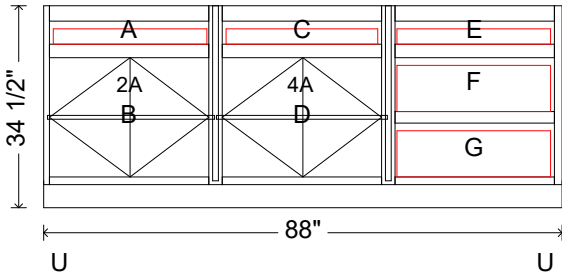


CAB 03 [base] [Stn File: ff_fac.stn]
 [room1] [wall1]

(W) 88" x (H) 34 1/2" x (D) 24"
 left scribe: 1/4" right scribe: 1/4"

(Overall width and height may not match cabinet width and height. Confirm by checking your measurements.)



OPENING	DESCRIPTION	WIDTH	HEIGHT
OPENINGS			
A	Drawer	27"	x 4"
B	Door (pair)	27"	x 20 1/4"
C	Drawer	27"	x 4"
D	Door (pair)	27"	x 20 1/4"
E	Drawer	27"	x 4"
F	Drawer	27"	x 9"
G	Drawer	27"	x 9"

OPENING	DESCRIPTION	WIDTH	HEIGHT	DADO DEPTH	DADO LOCATION (From bottom of opening)
SHELF OPENINGS					
2A	Open	28" x	9 3/4"	1/4"	9 3/4"
4A	Open	28 1/2" x	9 3/4"	1/4"	9 3/4"

OPENING	QTY	DESCRIPTION
DOORS / DRAWER-FRONTS		
F	1	3/4"slab (horizontal grain)(Red Oak) with no edging SIZE = 28"W x 10"H x 3/4"T
G	1	3/4"slab (horizontal grain)(Red Oak) with no edging SIZE = 28"W x 10"H x 3/4"T
A	1	3/4"slab (horizontal grain)(Red Oak) with no edging SIZE = 28"W x 5"H x 3/4"T
C	1	3/4"slab (horizontal grain)(Red Oak) with no edging SIZE = 28"W x 5"H x 3/4"T
E	1	3/4"slab (horizontal grain)(Red Oak) with no edging SIZE = 28"W x 5"H x 3/4"T
B	2	3/4"square frame (Red Oak) with raised panel(s) (Red Oak) SIZE = 13 7/8"W x 21 1/4"H x 3/4"T
D	2	3/4"square frame (Red Oak) with raised panel(s) (Red Oak) SIZE = 13 7/8"W x 21 1/4"H x 3/4"T

QTY	WIDTH	LENGTH	THICKNESS	PART	MATERIAL
FACE FRAME					
3	2 1/2"	x 27"	x 3/4"	Top Rail	Red Oak
2	2 1/4"	x 30 1/2"	x 3/4"	Center Stile	Red Oak

ASSEMBLY SHEET FOR CAB 03

QTY	SIZE			PART	MATERIAL	
FACE FRAME (continued)						
4	2 1/4"	x	27"	x 3/4"	Center Rail	Red Oak
3	1 1/2"	x	27"	x 3/4"	Bottom Rail	Red Oak
1	1 1/4"	x	30 1/2"	x 3/4"	Right Stile	Red Oak
1	1 1/4"	x	30 1/2"	x 3/4"	Left Stile	Red Oak
BOX PARTS						
1	29 1/4"	x	29 1/4"	x 1/4"	Back	Melamine (white 1-sided)
2	28 5/8"	x	29 1/4"	x 1/4"	Back	Melamine (white 1-sided)
1	23 1/4"	x	29 3/4"	x 3/4"	Right Panel	Melamine (white 1-sided)
1	23 1/4"	x	29 3/4"	x 3/4"	Left Panel	Melamine (white 1-sided)
1	23 1/4"	x	29"	x 3/4"	Bottom	Melamine (white 1-sided)
2	23 1/4"	x	28 1/2"	x 3/4"	Bottom	Melamine (white 1-sided)
2	22 1/4"	x	29 3/4"	x 3/4"	Partition	Melamine (white 2-sided)
1	22 1/4"	x	29"	x 3/4"	Fixed Shelf	Melamine (white 2-sided)
1	22 1/4"	x	28 1/2"	x 3/4"	Fixed Shelf	Melamine (white 2-sided)
1	4 3/4"	x	88"	x 3/4"	Back Toe Kick	Particle Board
1	4 3/4"	x	88"	x 3/4"	Front Toe Kick	Particle Board
8	4 3/4"	x	18 1/4"	x 3/4"	Sleeper	Particle Board
2	4"	x	28 1/2"	x 3/4"	Nailer	Particle Board
2	4"	x	28 1/2"	x 3/4"	Stretcher	Particle Board
4	4"	x	28"	x 3/4"	Nailer	Particle Board
4	4"	x	28"	x 3/4"	Stretcher	Particle Board